

LODGING HOSPITALITY

LHONLINE.COM

IDEAS FOR HOTEL DEVELOPERS & OPERATORS

A PENTON PUBLICATION

4.15.2007

Design of the **Times**

Saluting the industry's best

Staybridge Suites
Opens 100th

Bathroom
Amenities

The Tides, South Beach, Florida



Sitting Room, Sofitel Los Angeles

Design of the Times

After 13 years of producing *Lodging Hospitality's* design contest, the editors have decided to take a different approach to this popular feature. While well received, we've found the number and quality of applicants has declined over the past few years. Our hunch is that with the increased focus and interest in hospitality design in both the trade and consumer press, the number of design contests and other outlets for exposure has grown as well.

We thought, why depend on the whim of applicants that may or may not cross our desks? Why not simply collect, and publish, exciting and design-forward projects that WE like and present them as our own salute to design excellence?

And so, that's what you'll see here—carefully considered projects that represent some of the most creative, functional and design-forward work being created for the hotel industry today. Enjoy.

By Patricia Sheehan



Floating wood "walls" create nooks of coziness and intimacy within the open lobby space.

Hotel Palomar Dallas

Dallas

Interior Design: Cheryl Rowley

Cheryl Rowley is at the top of her game. Here, again, she demonstrates her dominance in hotel design with her contribution to the \$90-million property transformation, part of a mixed-use redevelopment. "Our inspiration for the Hotel Palomar Dallas was the inseparable rural and urban Texas landscape," says Rowley. "An earth-toned palette expressed within linear and

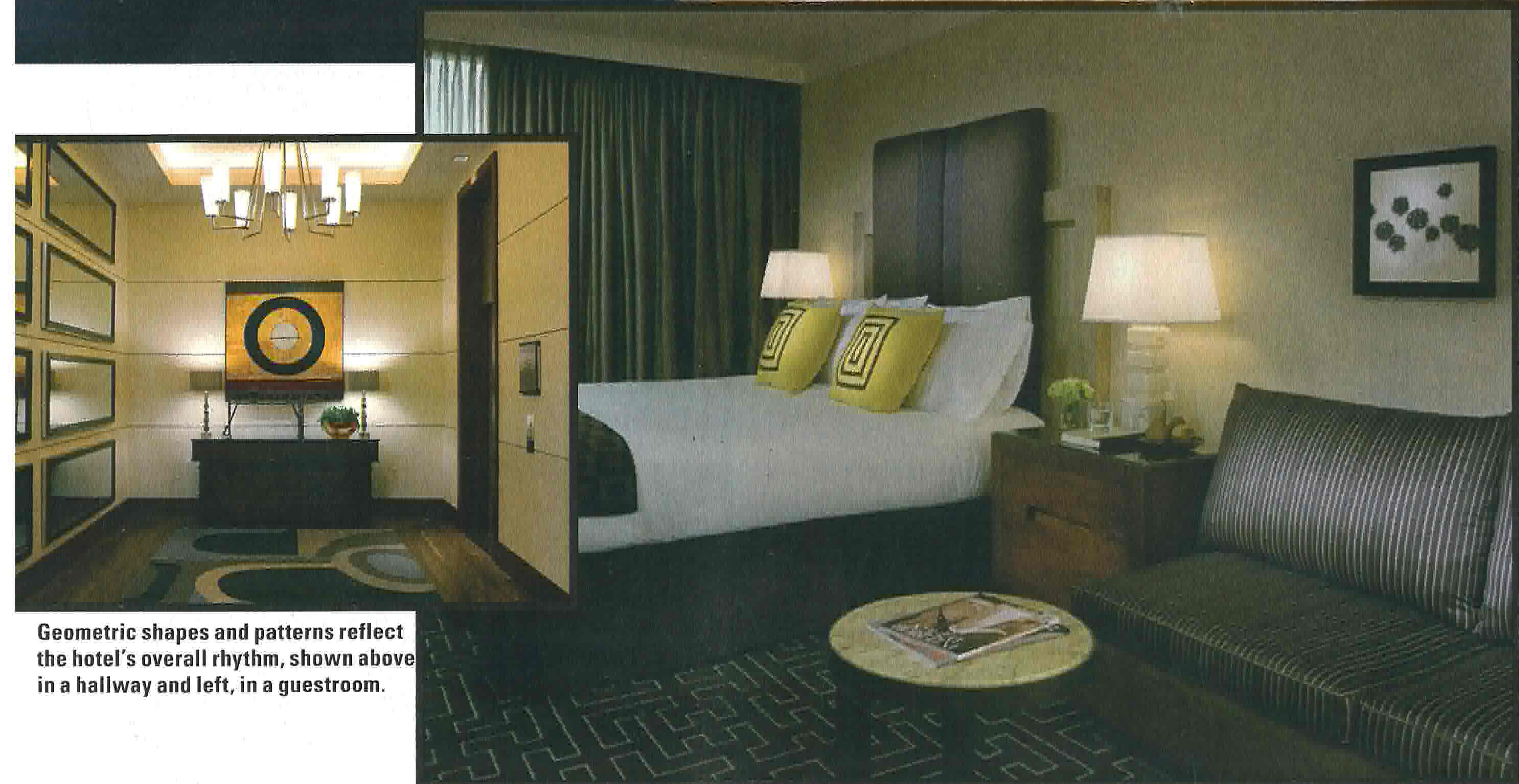
repeating forms captures the spirit of the Dallas skyline set on an open Texas plane."

Textural and visual juxtaposition of leather and velvet, animal print and geometric patterns, combined with warm woods and weathered metals highlight Dallas' contrast of the Southern plains against the Metroplex skyline, relates Rowley. Comfortable sofas, chaises and chairs placed amongst floating wood screen "walls" offer cozy areas within the openness.

Each guestroom features cerused headboard frames with upholstered taupe panels and artful accessories. Geometric shapes and patterns reflect the hotel's overall rhythm, albeit in a more sedate manner.



Warm woods and soft lighting fill this reception area at Hotel Palomar.



Geometric shapes and patterns reflect the hotel's overall rhythm, shown above in a hallway and left, in a guestroom.